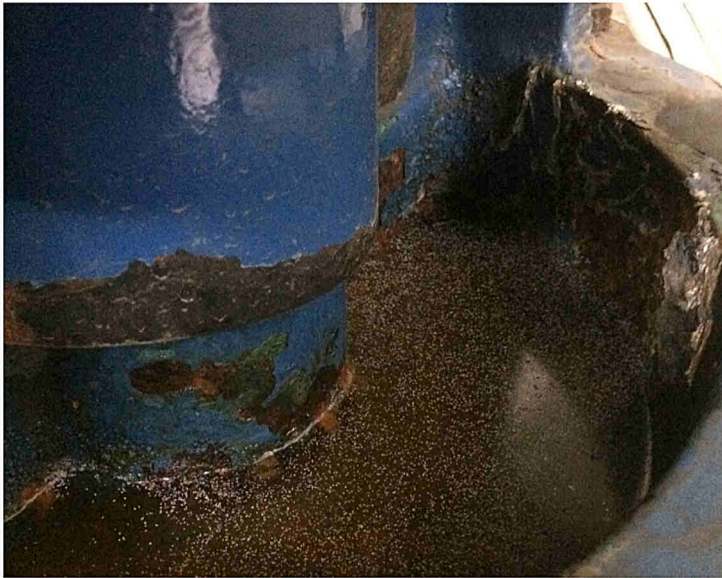


Heating Circulators Pump Replacements

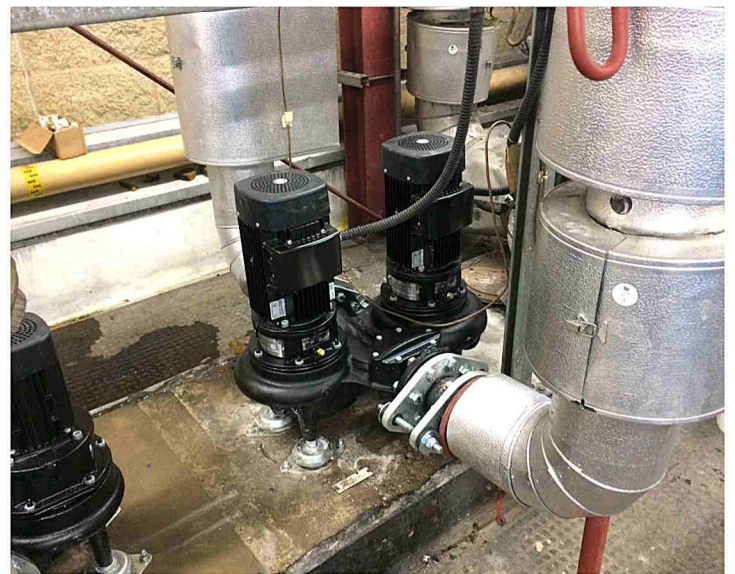
Industry: Building Services
Site: Manchester Arena
Department: Service
Project: Heating system circulator pump replacements

The Arena had a dated heating circulation system comprising of a mixture of old Holden & Brooke twin head pumping equipment that Marshall Pumps have serviced and overhauled many times over the years. Our instruction was to replace the old equipment with new.



To minimise disruption in this very busy national venue, each pump had one head removed, blanked and then was put back into service until the replacement pumps were ready to be installed.

The Grundfos energy efficient replacements were carefully selected based on the dimensions and operating characteristics of the original pumps, making note of any system changes that have occurred over the years.



All works inclusive of commissioning were carried out in line with ISO procedures and site work practices. Risk and method statements were all noted and adhered to.

**BUILDING SERVICES | PUMPS | PIPEWORK
CLADDING | FITTINGS | SPECIFICATION
SITWORK | SERVICE | CHAS | RAMS**